

2ME Live Switcher AV-HS6000

Chroma Key Activation Tool

User Guide

■ Overview

This document describes how to use the Chroma Key Activation Tool to add chroma key functions to the 2ME Live Switcher AV-HS6000.

■ System requirements for Chroma Key Activation Tool

A computer that meets the following requirements is necessary for the Chroma Key Activation Tool to operate properly.

Supported OS: Windows 7, 32-bit edition

■ About the Chromakey Software (AV-SFU60G)

- The AV-SFU60G Chromakey Software (paid) is required to add the chroma key functions.
- Each Chromakey Software license allows you to acquire one activation code, and 1ch/ME (2ch/2ME) chroma key functions can be added to a single Main Frame.
- Up to three Chromakey Software licenses can be installed on a single Main Frame.
Purchase the necessary number based on your system.
- Store the key code supplied with the AV-SFU60G Chromakey Software safely together with the serial number of the Main Frame (AV-HS60U1/AV-HS60U2) for which activation was performed.

■ About this document

- The 2ME Live Switcher AV-HS6000 consists of the following components:
 - Main Frame (AV-HS60U1/AV-HS60U2)
 - Control Panel (AV-HS60C1/AV-HS60C2)
 - Menu Panel (AV-HS60C3)Each component is respectively referred to as "Main Frame", "Control Panel", and "Menu Panel" in this document.
- This document describes menu operations via the Menu Panel, but you can perform the same operations via a standard DVI monitor and mouse.
 - ☞ Refer to "Chapter 4 Preparations – Basic menu operations" in the Operating Guide.

■ Steps for adding chroma key channels

Follow the steps below to add chroma key functions to the AV-HS6000.

1. Check the firmware version



2. Connect to a computer



3. Export the device information



4. Acquire the activation code



5. Import the activation code



6. Verify activation

A memory card is required to acquire the activation code.

- There must be at least 200 MB of free space on the memory card.

1. Check the firmware version

Check the firmware version of the AV-HS6000.

1 Press the <SYS> button on the left side of the Menu Panel to light it, and select the [MAINTENANCE] → [Status] tab in the menu screen.

- The version information for the entire system appears in the [System Version] field under the [System Version] column.

Note:

If the firmware version of the AV-HS6000 is earlier than "1.30-00-0.00", the firmware requires an upgrade to enable the addition of chroma key channels. For the latest information on firmware, visit the support page of the following website.

Japanese: <http://panasonic.biz/sav>
English: <http://pro-av.panasonic.net/en>

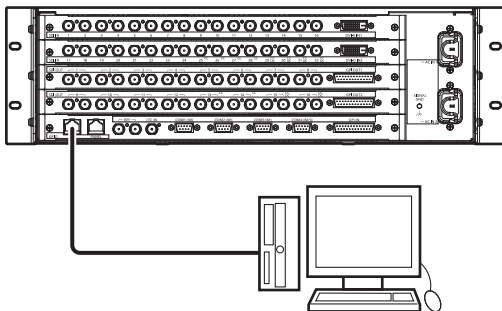
2. Connect to a computer

Connect the Main Frame to a computer.

1 Turn off the Main Frame.

2 Connect the LAN connector on the rear panel of the Main Frame to the computer using a LAN cable.

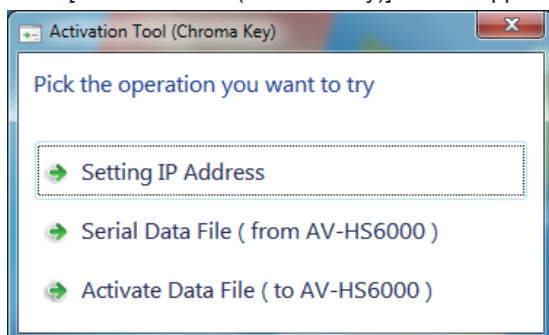
- You can use either a straight cable or a cross cable.



3 Turn on the Main Frame.

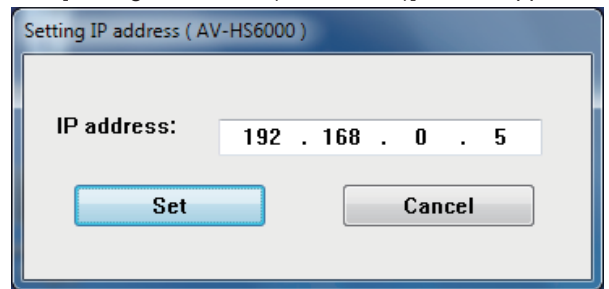
4 Double-click the Chroma Key Activation Tool (License.exe).

- The [Activation Tool (Chroma Key)] screen appears.



5 Select [Setting IP Address].

- The [Setting IP address (AV-HS6000)] screen appears.



6 Specify the IP address of the connected Main Frame, and click the [Set] button.

Notes:

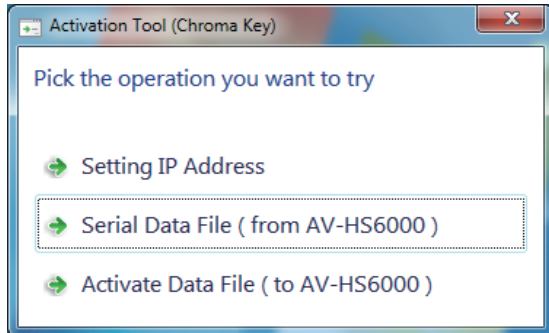
- The IP address is set to "192.168.0.5" under the Main Frame's factory default conditions. If you did not change the Main Frame's network settings from their factory default conditions, you do not have to configure the IP address in the Chroma Key Activation Tool.
- Configure an IP address for the computer that is unique but within the private address space of the Main Frame.

For example, if the Main Frame's IP address is "192.168.0.5", set the computer's IP address to "192.168.0.3" and the subnet mask to "255.255.255.0".

3. Export the device information

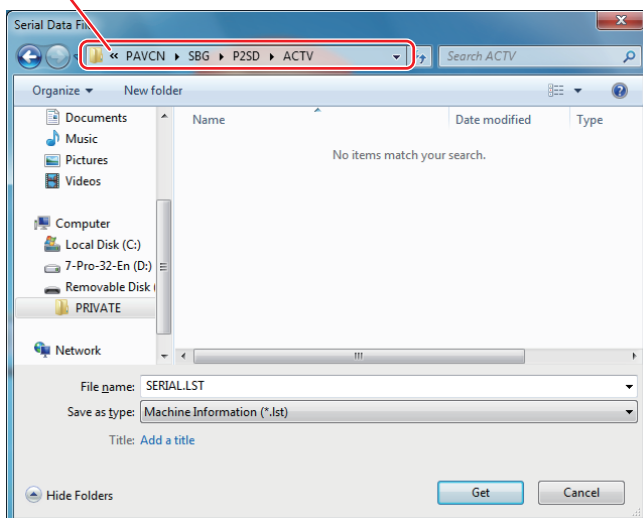
Export the device information from the Main Frame.

- 1 Insert a memory card into the computer.
- 2 Create the following folder on the memory card.
 - PRIVATE\MEIGROUP\PAVCN\SBG\P2SD\ACTV\
- 3 Select [Serial Data File (from AV-HS6000)] in the [Activation Tool (Chroma Key)] screen.



- The [Serial Data File] screen appears.
- 4 Specify the folder you created on the memory card as the destination and "SERIAL.LST" as the file name, and click the [Get] button.
 - The device information file is saved to the memory card.

Specify the "PRIVATE\MEIGROUP\PAVCN\SBG\P2SD\ACTV" folder on the memory card.



4. Acquire the activation code

Connect to the activation code site, and acquire the activation code.

- 1 Insert the memory card on which the device information file was saved into a computer that is connected to the Internet.
- 2 Access the following activation code site using a browser on the computer, and perform the instructions on the screen to acquire the activation code.

Japanese: http://panasonic.biz/sav/actkey_j
English: http://panasonic.biz/sav/actkey_e

- The activation code "ACTIVE.LST" will be saved to the "PRIVATE\MEIGROUP\PAVCN\SBG\P2SD\ACTV" folder on the memory card.

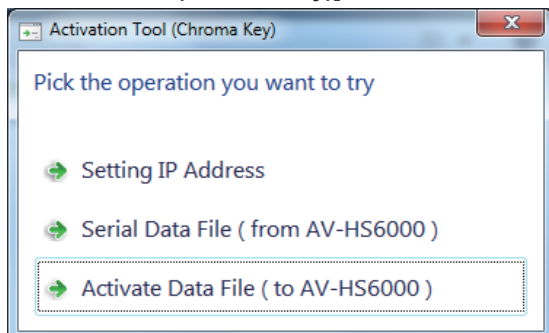
Notes:

- The key code supplied with the Chroma Key Software (AV-SFU60G) is required to acquire the activation code.
- If a "ACTIVE.LST" file already exists in the "PRIVATE\MEIGROUP\PAVCN\SBG\P2SD\ACTV" folder on the memory card, some browsers may automatically change the file name. Verify that a "ACTIVE.LST" file does not exist in the above folder before saving the file.

5. Import the activation code

Import the activation code to the Main Frame.

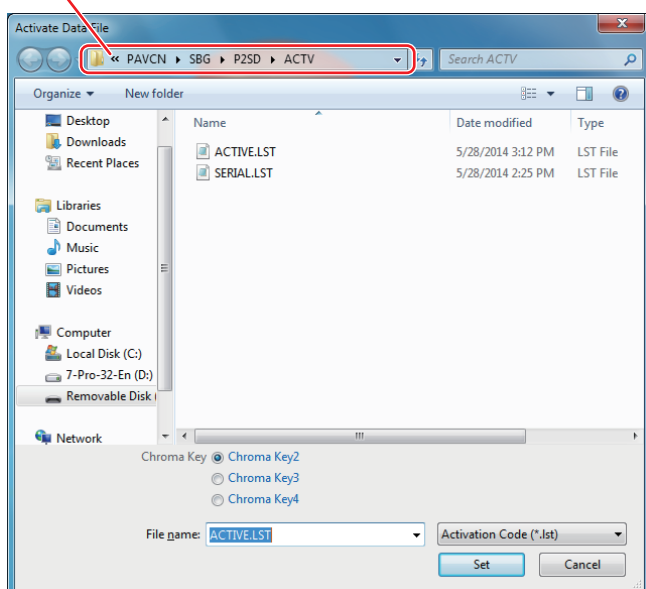
- 1 Insert the memory card on which the activation code was saved into the computer that is connected to the Main Frame.
- 2 Select [Activate Data File (to AV-HS6000)] in the [Activation Tool (Chroma Key)] screen.



- The [Activate Data File] screen appears.

- 3 Open the folder in which the activation code is stored.

Specify the "PRIVATE\MEIGROUP\PAVCN\SBG\P2SD\ACTV" folder on the memory card.



- 4 Select the import destination channel (i.e., the key channel for which to enable the chroma key functions) by selecting a checkbox from [Chroma Key2] to [Chroma Key4].

- 5 Select the activation code file "ACTIVE.LST", and click the [Set] button.

- When adding chroma key functions to multiple keyers, repeat the steps in "4. Acquire the activation code" and "5. Import the activation code".

Notes:

Beware of the following when importing activation codes to a Main Frame on which chroma key functions have already been added.

- If you import another activation code to a channel on which chroma key functions have already been added, the previously imported activation code will be deleted from the Main Frame.
- If you import an activation code that has already been imported to a different channel, the chroma key functions will be disabled on the channel to which the code was previously imported, and enabled on the new channel.

6. Verify activation

- 1 Turn off the Main Frame and Control Panel.
- 2 Disconnect the LAN cable connected to the LAN connector on the rear panel of the Main Frame.
- 3 Turn on the Main Frame and Control Panel.
- 4 Press the <ME1> button on the left side of the Menu Panel to light it.
- 5 Open function menus [KEY2] to [KEY4], and verify that the chroma key functions are enabled. The following menu settings are available for channels on which chroma keys are enabled.
 - When the [Key Setting] tab → [Key] column → [Type] item is selected, [Chroma] can be selected.
 - The [Chroma] tab can be selected.

This completes the procedure for adding chroma key functions.